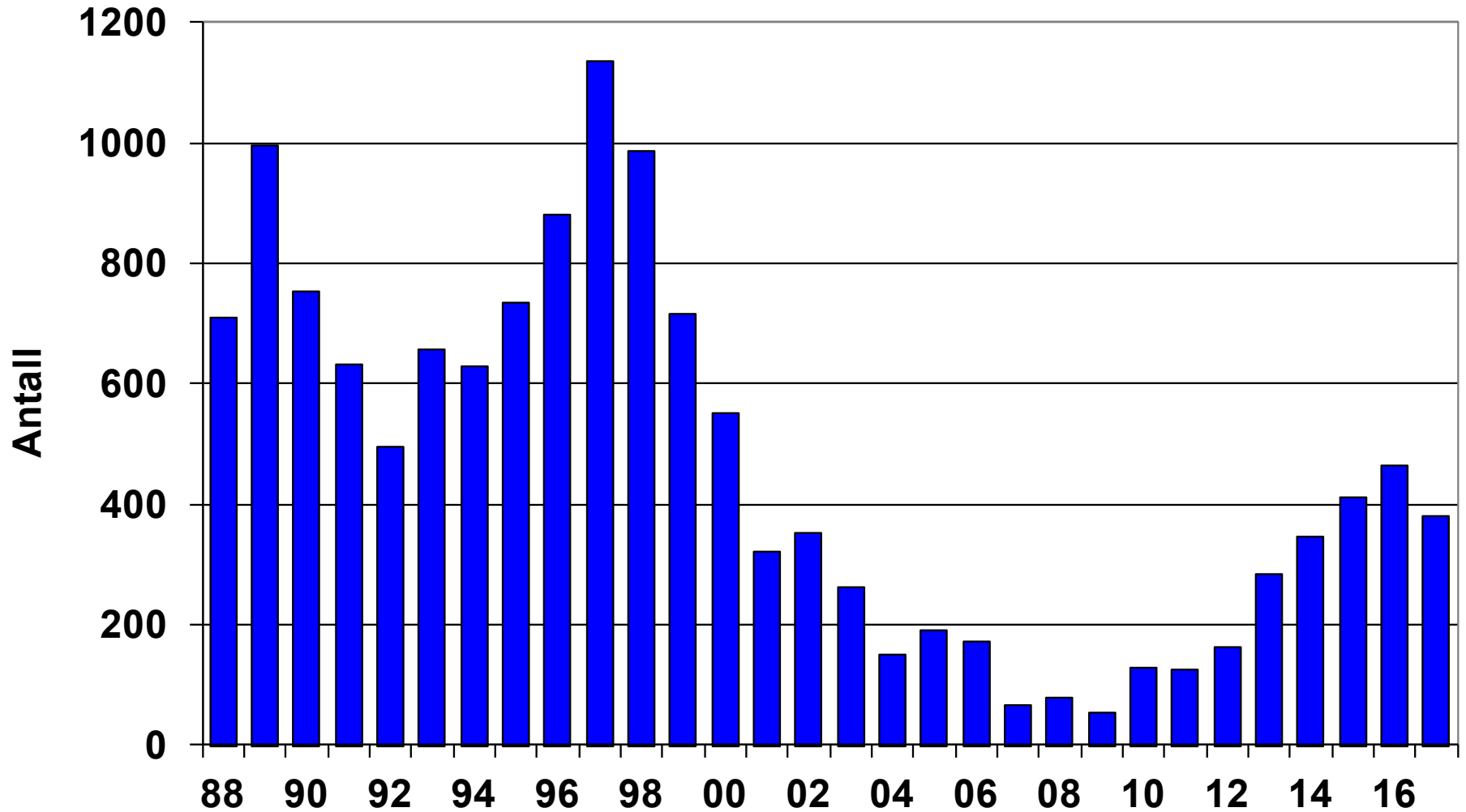
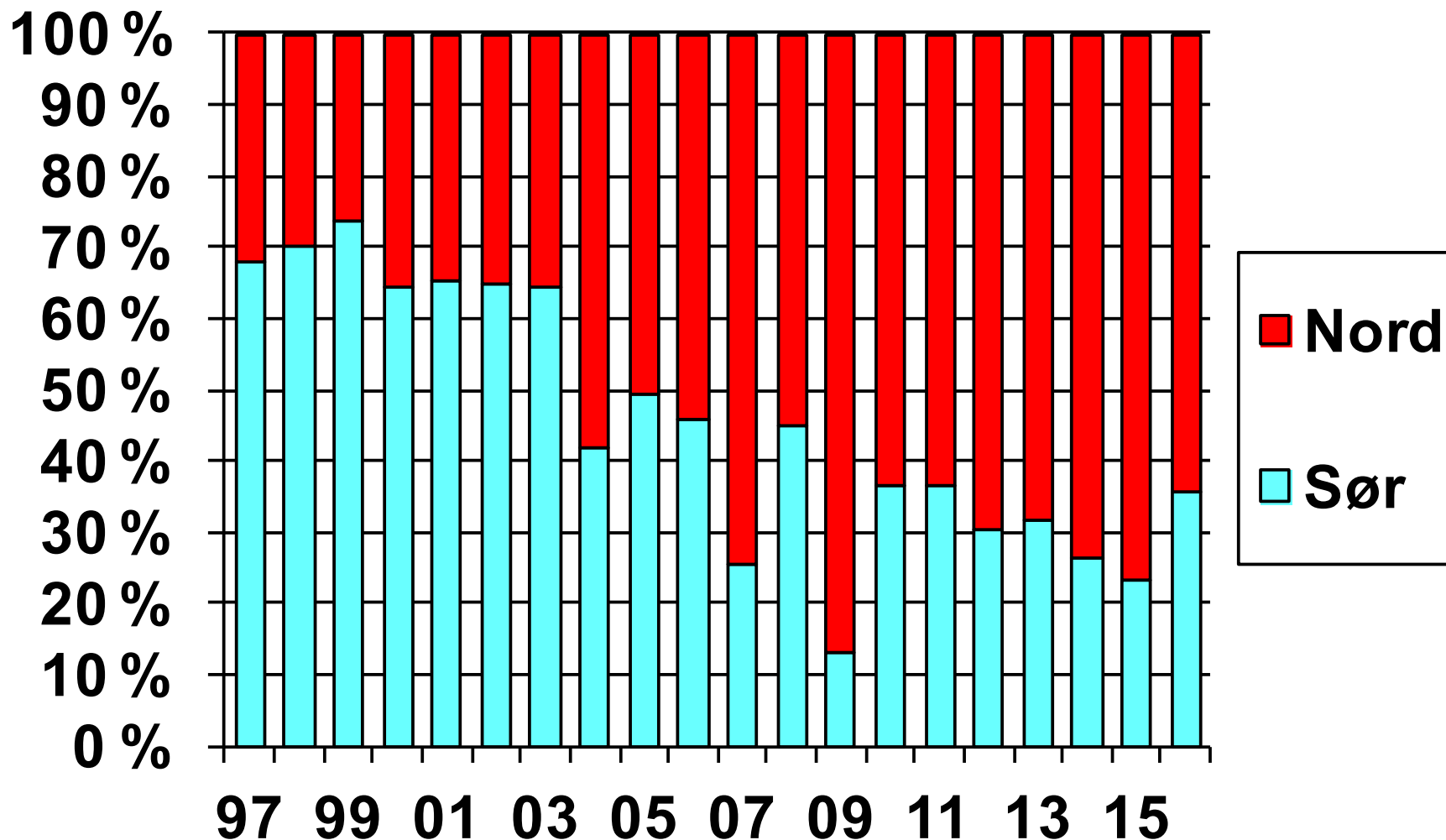


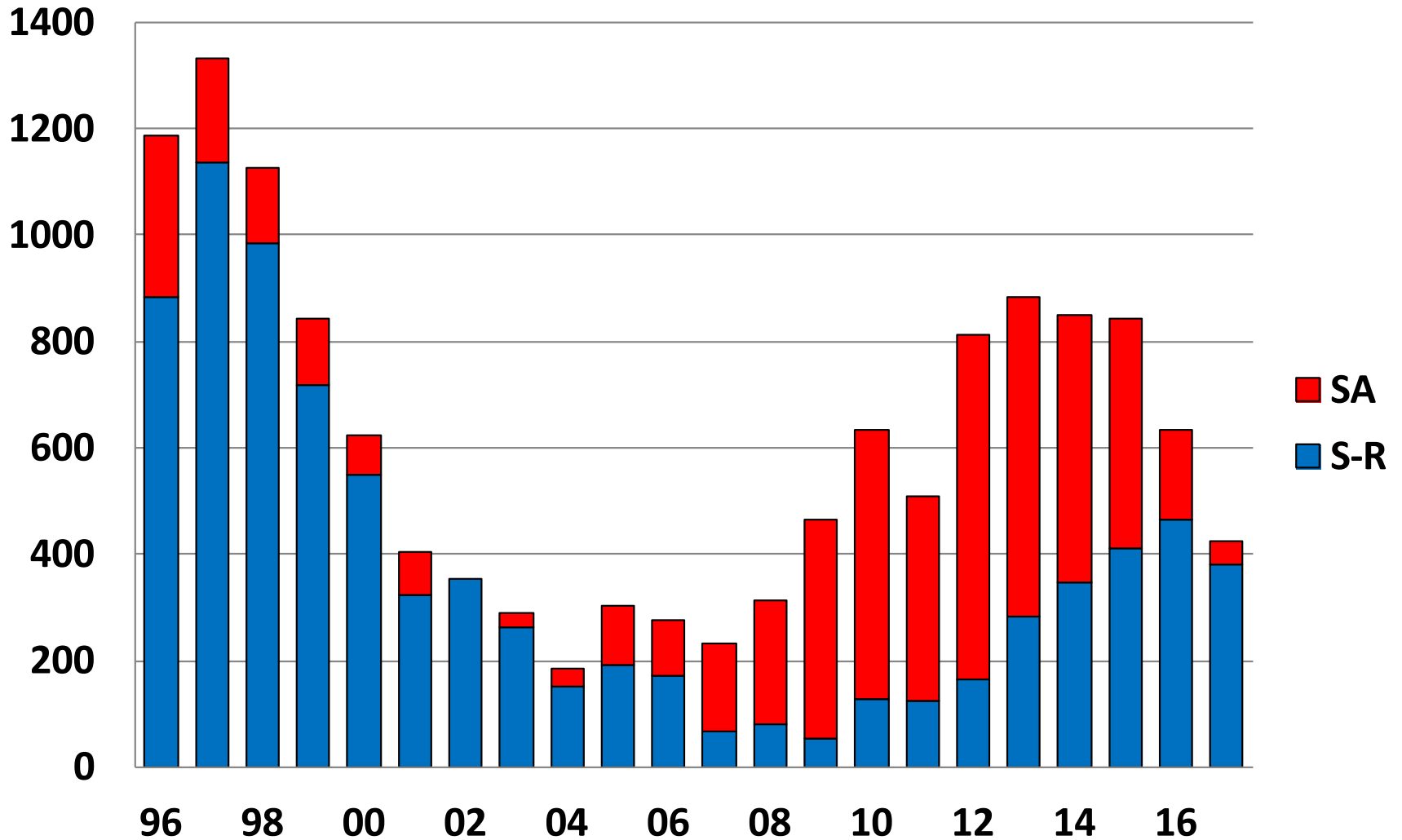
Felte dyr i Setesdal-Ryfylke



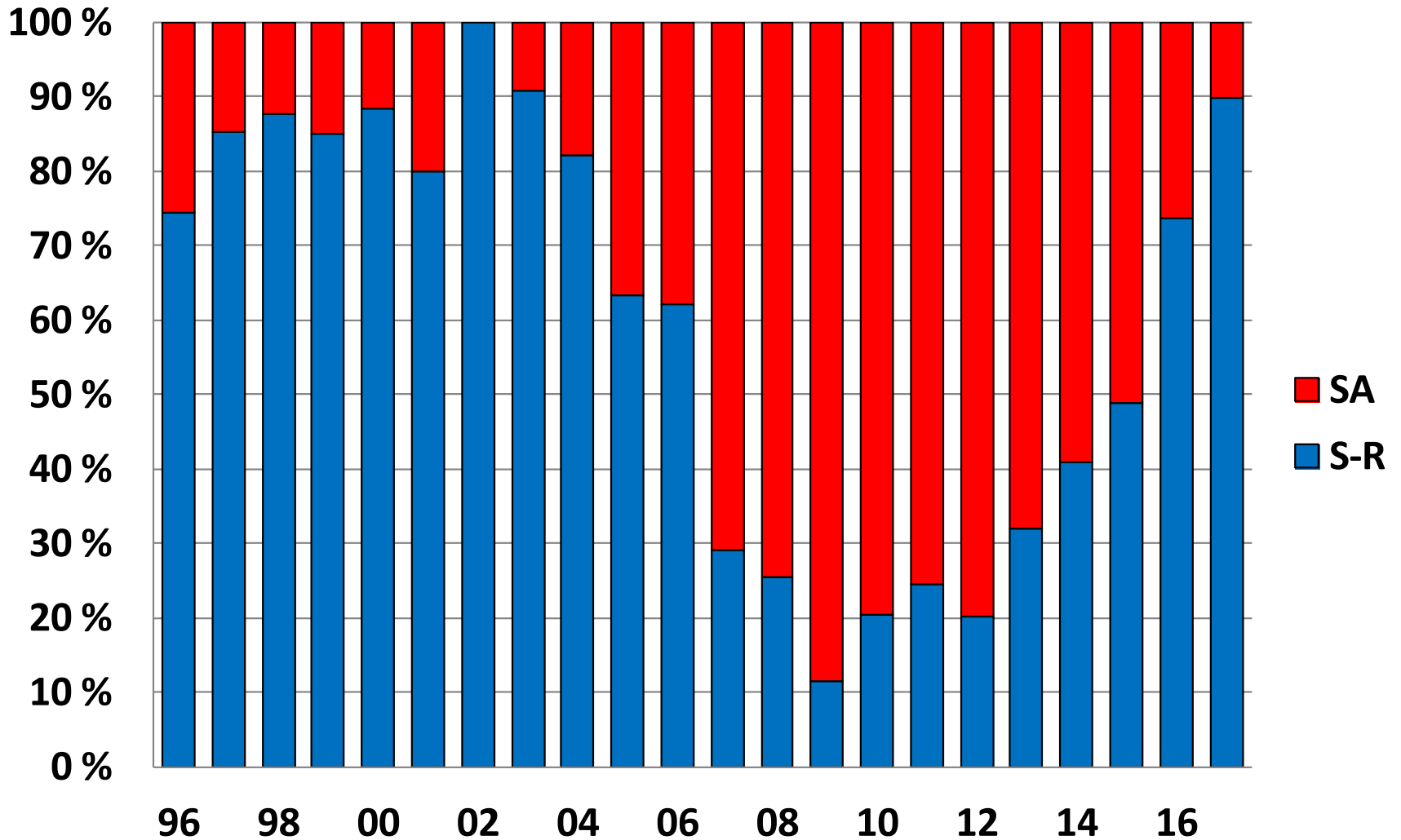
% - andel felt Nord – Sør i S-R



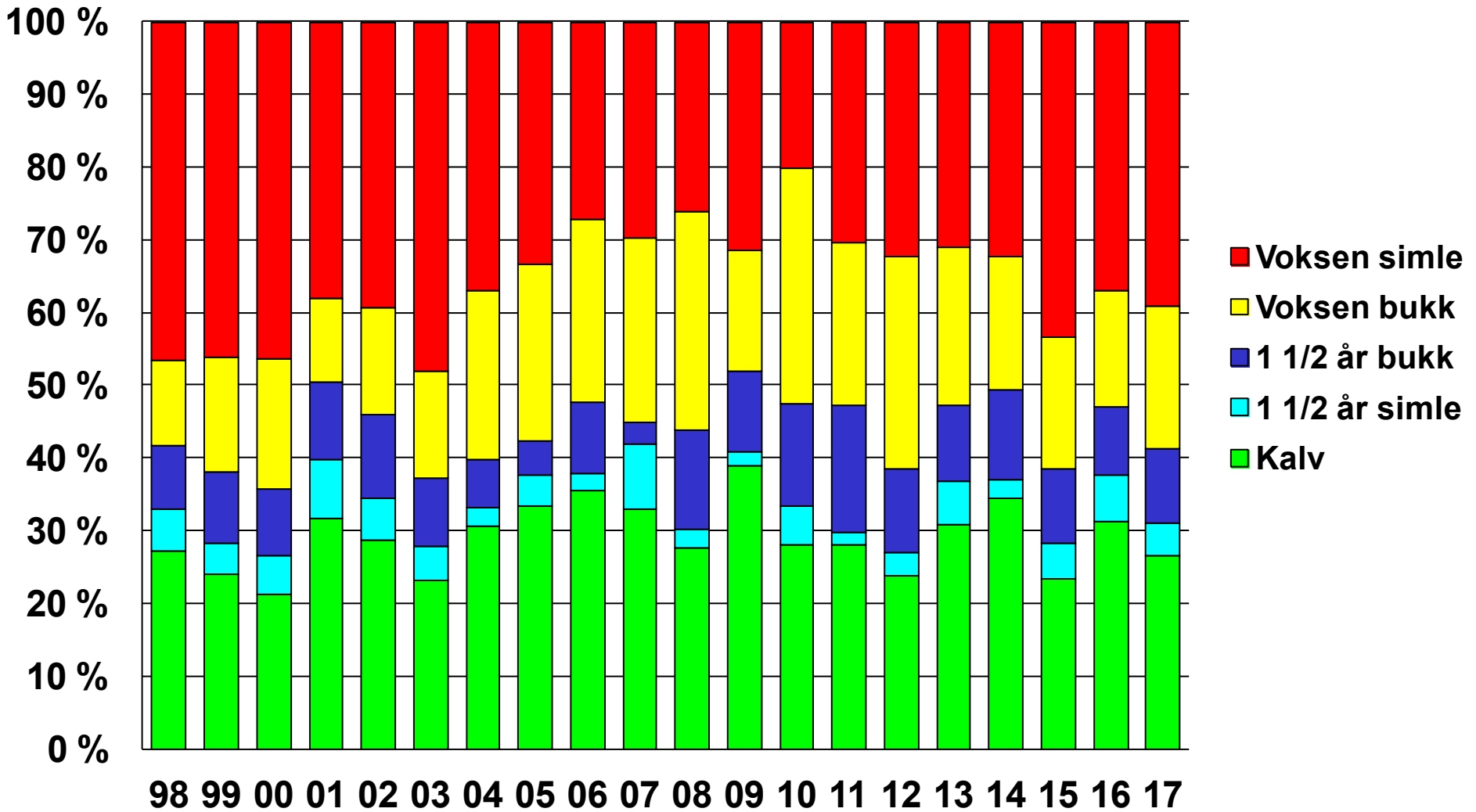
Fordeling felte dyr i S-R og SA



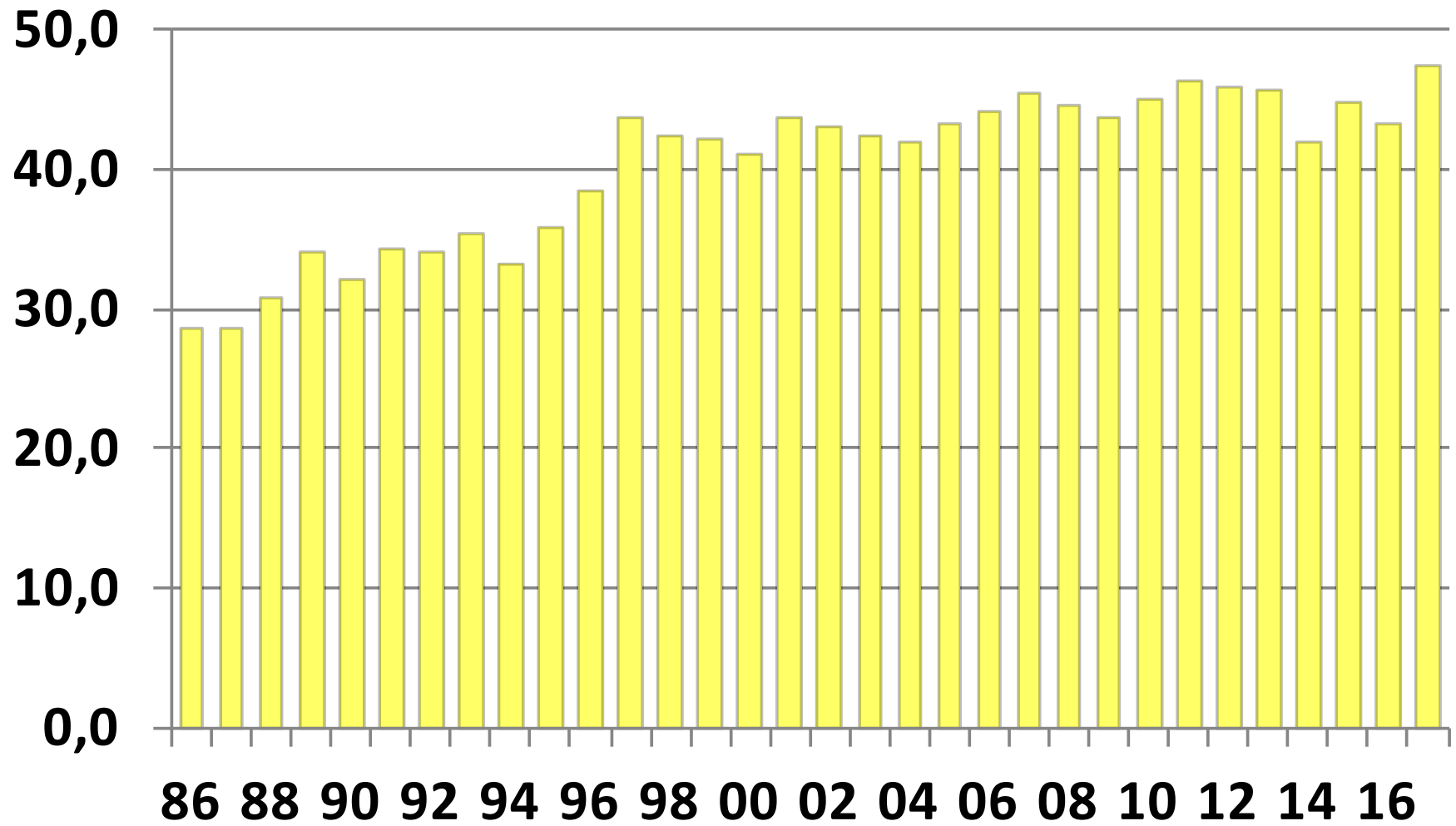
Fordeling felte dyr i S-R og SA



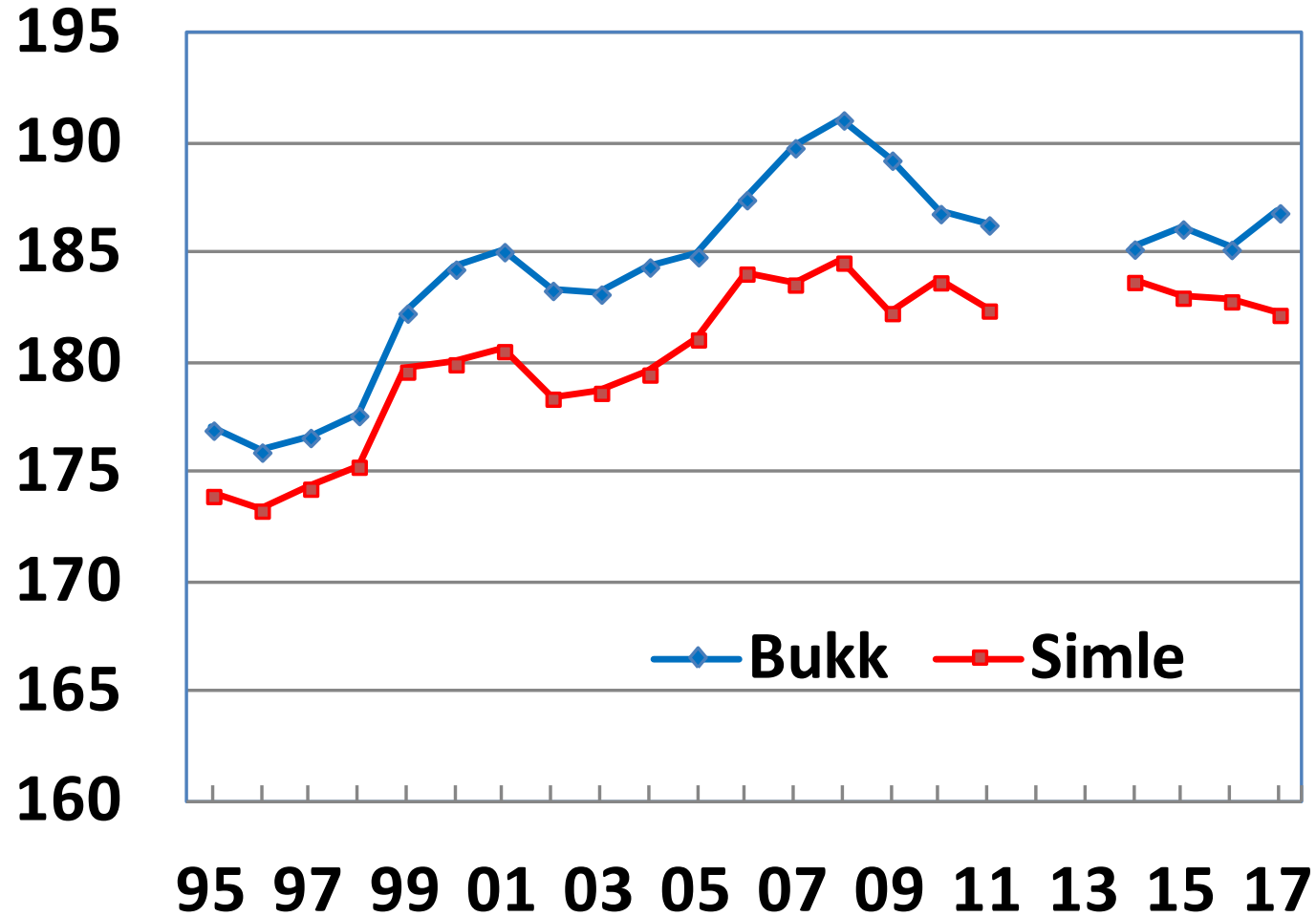
Felte dyr i S-R, fordelt på kategorier



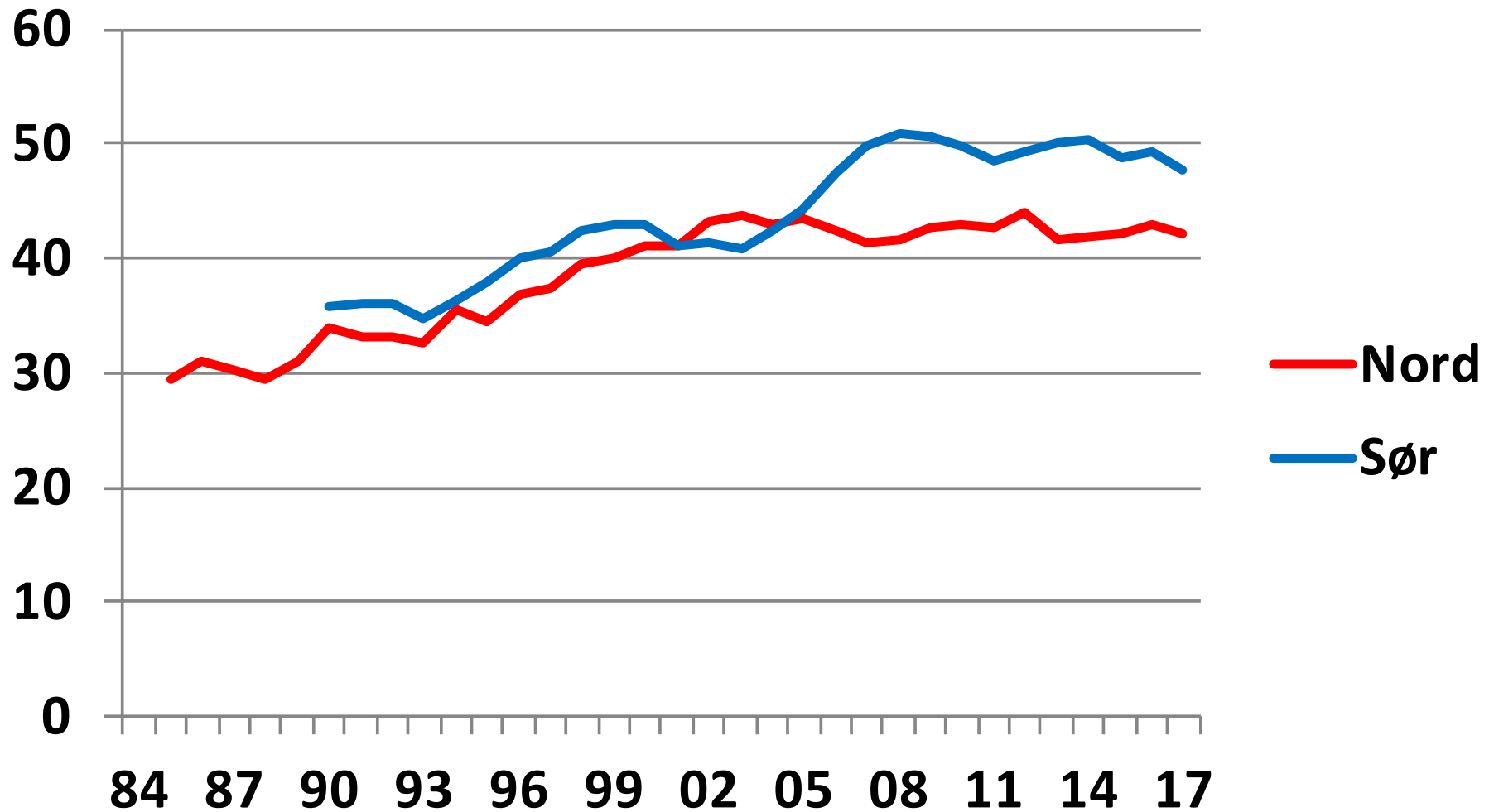
Kalveproduksjon i S-R 1986 - 2017 - Glattet kurve



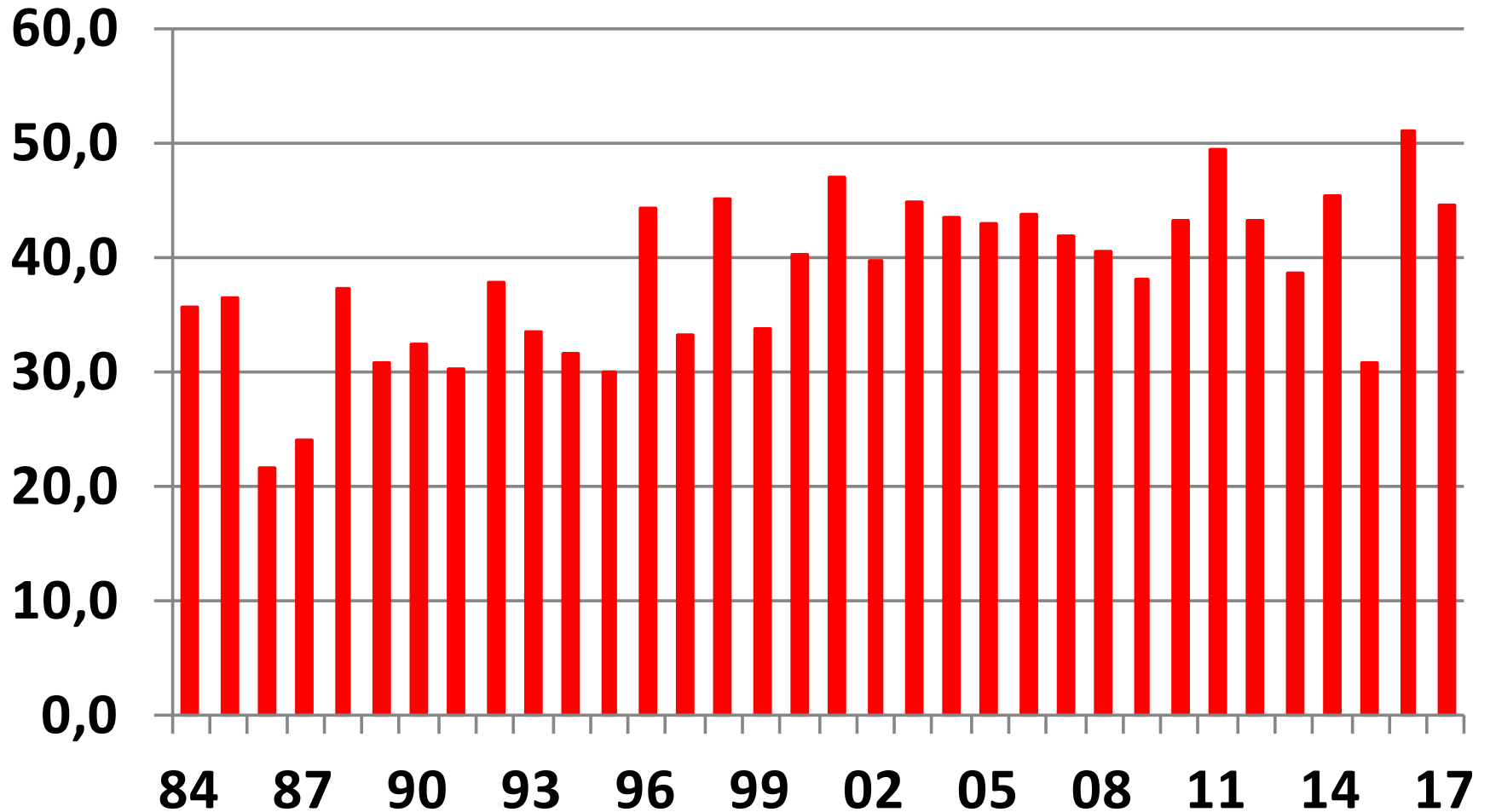
Kjevelengde felt kalv S-R



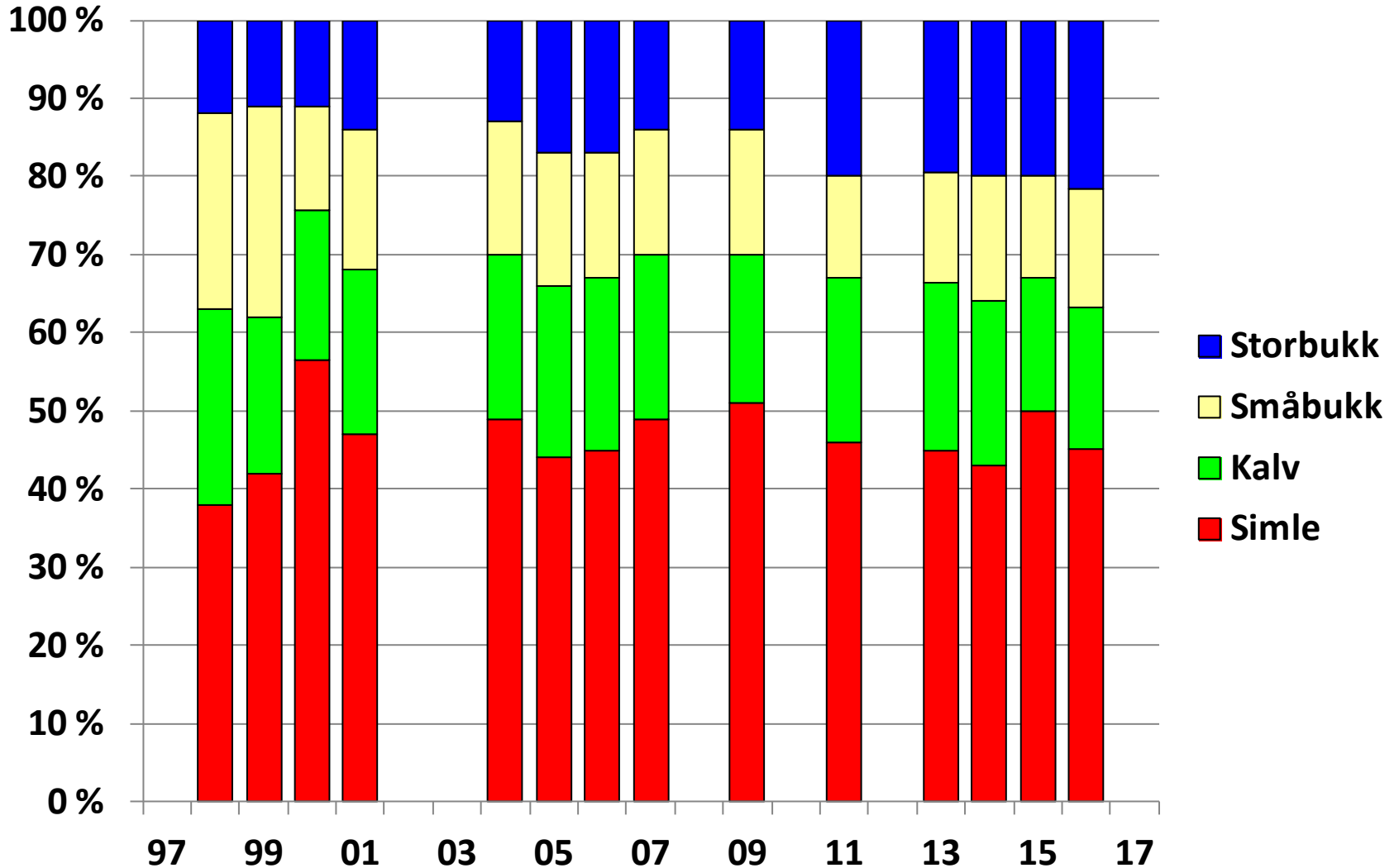
Kalveproduksjon i S-R 1984-2017. Glattet kurve.



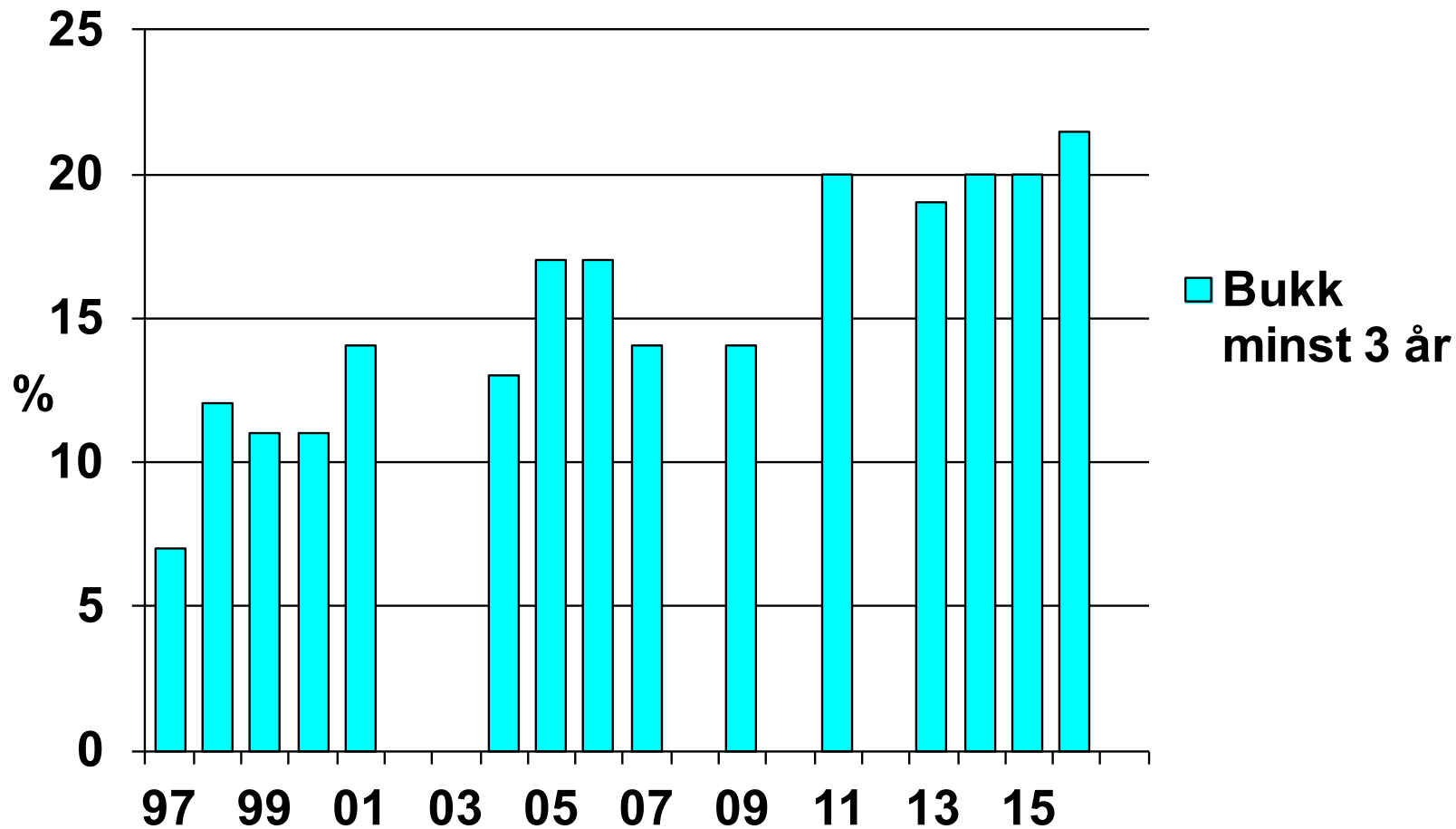
Kalveproduksjon SR - Nord



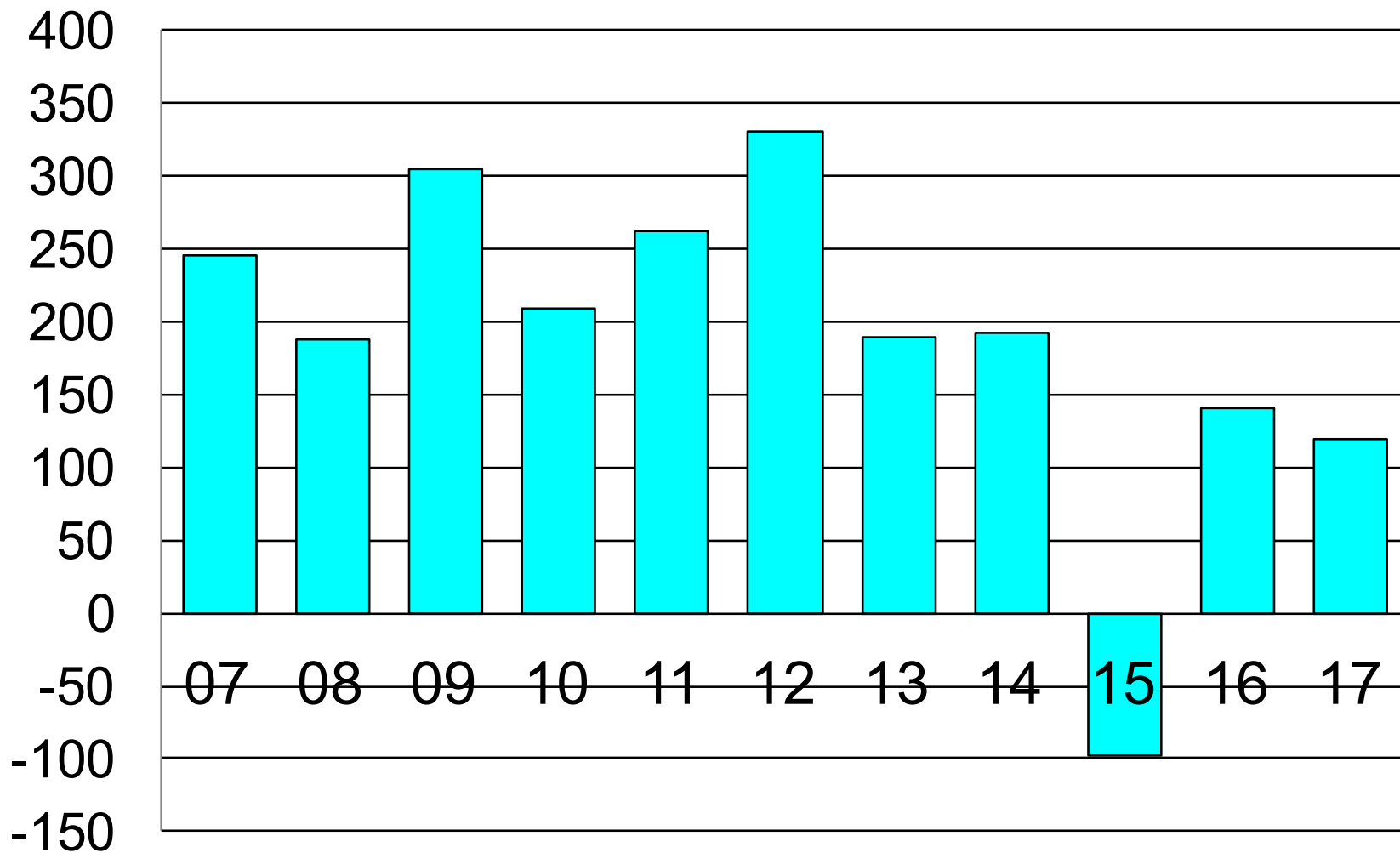
Strukturteilinger Setesdal Ryfylke



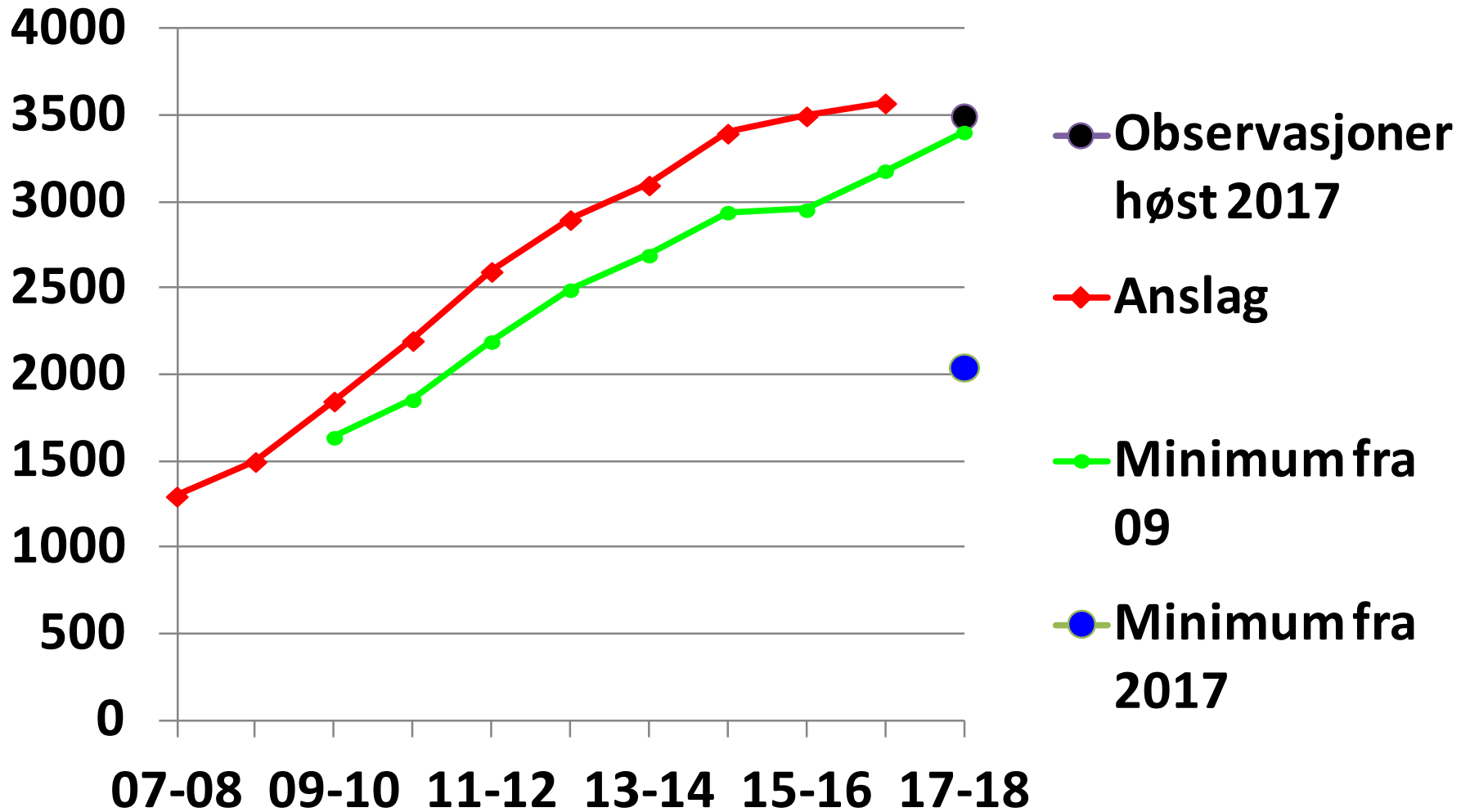
Andel storbukk i S-R ut fra strukturtellinger



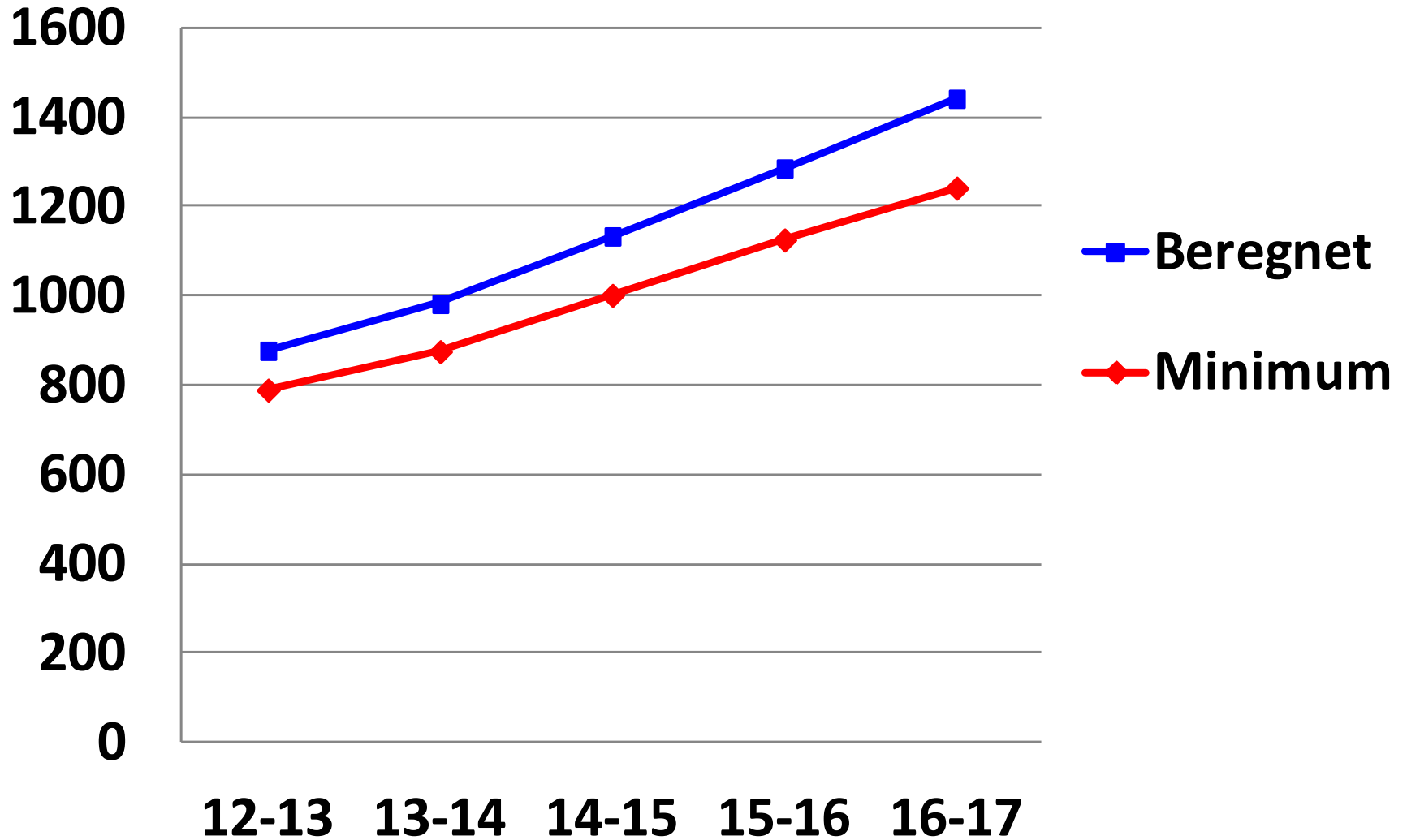
Dokumentert fødselsoverskudd i Setesdal Ryfylke



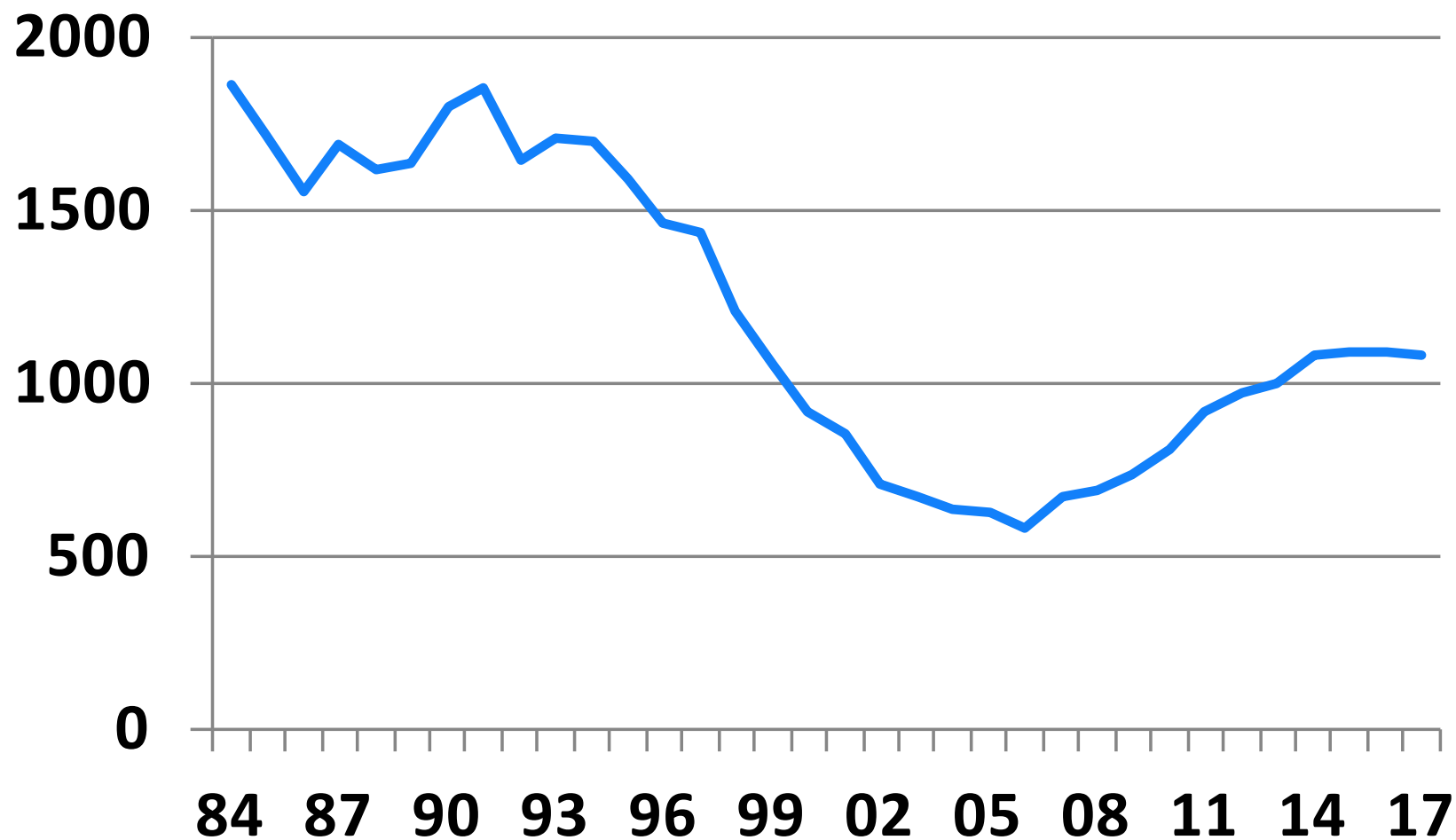
Bestandsutvikling for Setesdal - Ryfylke

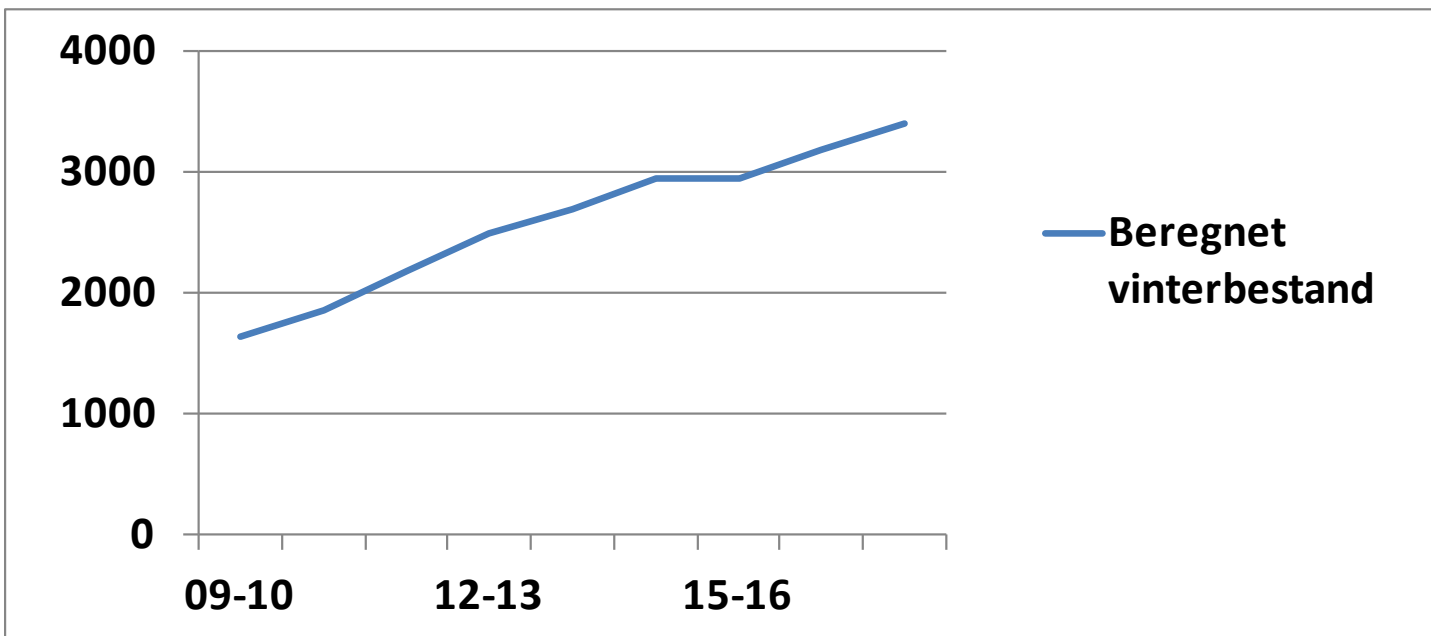
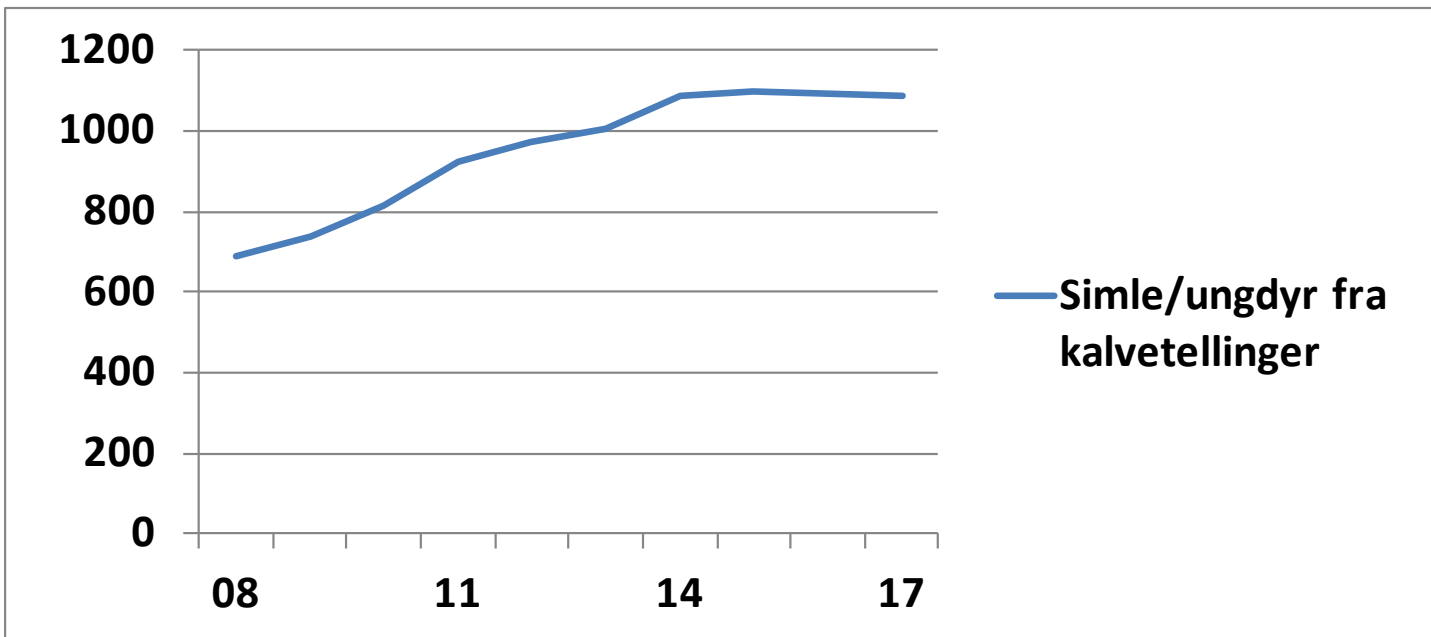


Setesdal Ryfylke - Sørrområdet



Simple/ungdyr funnet ved kalvetellingene i S-R – Glattet kurve over 5 år





Avskytingsplan for Setesdal - Ryfylke villreinområde 2018

Styreforslag pr. 15.11.

Forutsetninger avskytingsplan 2018:

Fellingsmål: 650 dyr

		Nord	Sør
Minsteareal:		1,25 km ²	3,0 km ²
Kortfordeling:	F	5 %	6 %
	S/U	10 %	14 %
	S	35 %	30 %
	K	50 %	50 %

Forventet felling: 22 %

Lag	Areal km ²	Tildelte dyr S-R 2017					Forventet felt	
		Sum	F	S/U	S	K	Tot.	Bukk
Odda	159	127	6	19	38	64		
Suldal	802	641	32	96	193	321		
Vinje	227	181	9	27	54	91		
Bykle	688	550	28	83	165	275		
Sum Nord	1877	1499	75	225	450	751		
Bykle	105	35	2	5	11	18		
Valle	480	160	10	22	48	80		
Sirdal	746	248	15	35	75	124		
Forsand	305	101	6	14	30	51		
Hjelmeland	515	171	10	24	52	86		
Gjesdal	40	13	1	2	4	7		
Bygland	544	181	11	25	54	91		
Åseral	394	131	8	18	39	66		
Kvinesdal	441	147	9	21	44	74		
Hægebostad	76	25	2	4	8	13		
Njardarheim	634	239	14	34	72	120		
Sum Sør	4279	1451	87	204	436	727		
Sum S-R	6156	2950	162	429	887	1478	649	46